



# COMPANY PROFILE

[www.thebimskills.com](http://www.thebimskills.com)

## THE CONTENT

About The BIM skills

03

Founder Statment

04

Mission & Vision

05

Our Values

06

Our Advantages

06

About BIM

07

Why BIM?

08

Advantages of BIM

08

Our BIM Services

09

Our Software Expertise

11

Our Projects

13

Thank You!

45

# ABOUT The BIM skills

## A Brief About The Company

"At The BIM skills, we're more than just a company; we're a team of passionate professionals, driven by innovation and fueled by enthusiasm for cutting-edge technologies. With our dynamic blend of creativity and expertise, we're not just active participants in the tech realm—we're pioneering the way forward.

Our team is a vibrant tapestry of diverse talents, united by a shared commitment to excellence and a relentless pursuit of innovation. From the latest advancements in Building Information Modeling (BIM) to emerging technologies shaping the future of our industries, we're at the forefront, exploring, experimenting, and pushing boundaries.

What sets us apart is not just our technical prowess, but our passion for what we do. We thrive on challenges, revel in exploration, and embrace every opportunity to learn and grow. With us, you're not just getting a team of experts; you're gaining a dedicated partner on a journey of discovery and transformation.

Join us as we harness the power of technology to create solutions that inspire, empower, and shape the world of tomorrow. Together, let's innovate, let's explore, and let's build a future where possibilities are limitless."

# FOUNDER STATEMENT



**Syed Amaan Quadri**  
Founder - The BIM skills

At The BIM skills, our founder, Syed Amaan Quadri, is a trailblazer in Building Information Modeling (BIM), renowned for his groundbreaking projects and transformative training initiatives that have empowered professionals worldwide. With a passion for innovation and a commitment to education, he has led our team in implementing cutting-edge BIM and GIS solutions across diverse projects.

Our expertise extends to high-profile ventures such as the NEOM Logistics Park landscape, where we implemented both BIM and GIS during the handover phase, and the Al Shura Islands Red Sea project, where we implemented GIS during the handover phase to optimize data integration and project finalization. Additionally, we've pioneered digital twin housing projects in the Netherlands, warehouse improvement initiatives in South Africa, and residential and commercial developments in Dubai, Sharjah, and India.

Through his visionary leadership, Syed Amaan Quadri has not only revolutionized organizations with groundbreaking BIM solutions but has also equipped professionals with the expertise to drive innovation and excellence in their fields. At The BIM skills, we take pride in being guided by a leader whose impact extends far beyond projects, leaving a lasting legacy of knowledge,

# MISSION & VISION

## MISSION

At The BIM skills, we're dedicated to revolutionizing the construction landscape through innovative BIM services and expert consulting. Our mission is simple yet profound: to empower our clients with the tools, strategies, and support they need to bring their boldest visions to life. We're not just service providers; we're partners committed to driving efficiency, collaboration, and excellence in every project we undertake. Together, we're shaping a future with BIM.

## VISION

Our vision at The BIM skills is clear: to lead the way in BIM services and consulting, setting new standards of excellence and innovation. We see a future where every project, large or small, benefits from the power of BIM to drive efficiency, sustainability, and impact. By harnessing technology, creativity, and nurturing talent, we empower our clients to achieve their goals beyond imagination.

# OUR VALUES

HONESTY

EXCELLENCE

TEAM  
WORK

RELIABILITY

AGILITY

# OUR ADVANTAGES

COORDINATION

QUALITY  
ASSURANCE

EXTENSIVE  
EXPERIENCE

COST  
EFFECTIVE

GLOBAL  
REACH

# ABOUT BIM

BIM is a process for creating and managing all of the information on a project before, during and after construction. The output of this process is Building information Model, the digital description of every aspect of built asset.










"BIM is not just about the model,  
it's about the information – the 'I'  
in BIM

# WHY BIM?

"Building Information Modeling (BIM) revolutionizes the construction industry by seamless collaboration among stakeholders, enhancing accuracy through detailed 3D modeling, streamlining workflows for increased efficiency, and supporting sustainable practices, ultimately leading to cost-effective and high-quality project delivery across the entire building lifecycle."

# ADVANTAGES OF BIM?

-  **Enhanced Collaboration**- BIM facilitates better communication and coordination among project stakeholders.
-  **Improved Accuracy and Reduced Errors**- By creating a detailed 3D model, BIM helps identify potential conflicts and issues early in the design phase.
-  **Increased Efficiency** - BIM streamlines workflows by integrating various aspects of the design and construction process.
-  **Better Visualization**- The 3D models generated by BIM provide a clear and detailed visual representation of the project.
-  **Cost Savings**- BIM helps in accurate cost estimation and budget management by providing detailed quantity take-offs.
-  **Lifecycle Management**- BIM supports the entire lifecycle of a building, from initial design and construction to maintenance.
-  **Enhanced Quality Control**- BIM ensures higher quality construction by enabling precise planning and execution, minimizing errors.

# OUR BIM SERVICES

## BIM CONSULTING

BIM Implementation  
BIM Adoption  
Digital Integration  
BIM Execution Planning  
COBIE Services  
FM Data

## BIM SERVICES

3D BIM Modelling  
4D Scheduling  
5D Estimation  
SCAN TO BIM  
SCAN TO CAD  
CAD TO BIM  
Revit Family Creation  
Clash Detection  
BIM Automation  
BIM For Facility Management  
BIM Quantity Take-off  
BIM For Infrastructure  
Construction Documentation

## GIS SERVICES

Infrastructure GIS  
GIS Data Base Development  
Spatial Data Management

## ARCHITECTURE BIM SERVICES

Architecture 3D Modelling  
Construction Documentation Set  
CAD As Built Drawings  
Facade Shop Drawings

## STRUCTURE BIM SERVICES

Structure 3D Modelling  
Structure Steel Detailing  
Rebar Detailing  
Precast Detailing  
Steel Fabrication Shop Drawings

## MEPF BIM SERVICES

MEPF 3D Modelling  
MEPF Coordination  
Family Creation  
Clash Detection  
Quantity Takeoff and Drawings

## VISUALIZATION SERVICES

3D Visualization  
Site Logistics Study  
Rendered Walkthrough  
Realistics Rendering Images

## CAD SERVICES

2D Drafting and detailing for ASMEPF disciplines  
Construction Shop Drawings  
As Built/Record Drawings



# OUR SOFTWARE EXPERTISE

 **AUTODESK**  
Revit

 **AUTODESK**  
Navisworks Manage

 **AUTODESK**  
AutoCAD

 **AUTODESK**  
ReCap Pro

 **AUTODESK**  
Civil 3D

 **AUTODESK**  
Construction Cloud

 **GRAPHISOFT**  
**Archicad®**



 **Dynamo**



 **AUTODESK**  
**3DS MAX**



**ArcGIS Pro**



# OUR PROJECTS

01

## AL REEMAN DEVELOPMENT PHASE 3 PRECAST BIM MODELLING

This project involved detailed BIM modeling of precast concrete elements, including structural wall panels, columns, footings, slabs using Revit. The scope focused on modeling with precision to match fabrication requirements, ensuring alignment with architectural and structural design.

### DISCIPLINES INVOLVED

STRUCTURE

### OUR SCOPE OF WORK INCLUDED

**Zone-Based Cluster Modeling:** Developed and managed structural models for clusters located across three distinct zones, ensuring design consistency and coordination.

**Structural Element Development:** Modeled walls, slabs, columns, footings and other critical components according to project specifications and design drawings.

**Clash-Ready BIM Models:** Ensured models were clean and optimized for integration with architectural and MEP disciplines in a coordinated BIM environment.

**Navisworks Review & Visualization:** Imported models into Autodesk Navisworks for visualization, quick checks, and model validation to support further interdisciplinary review.

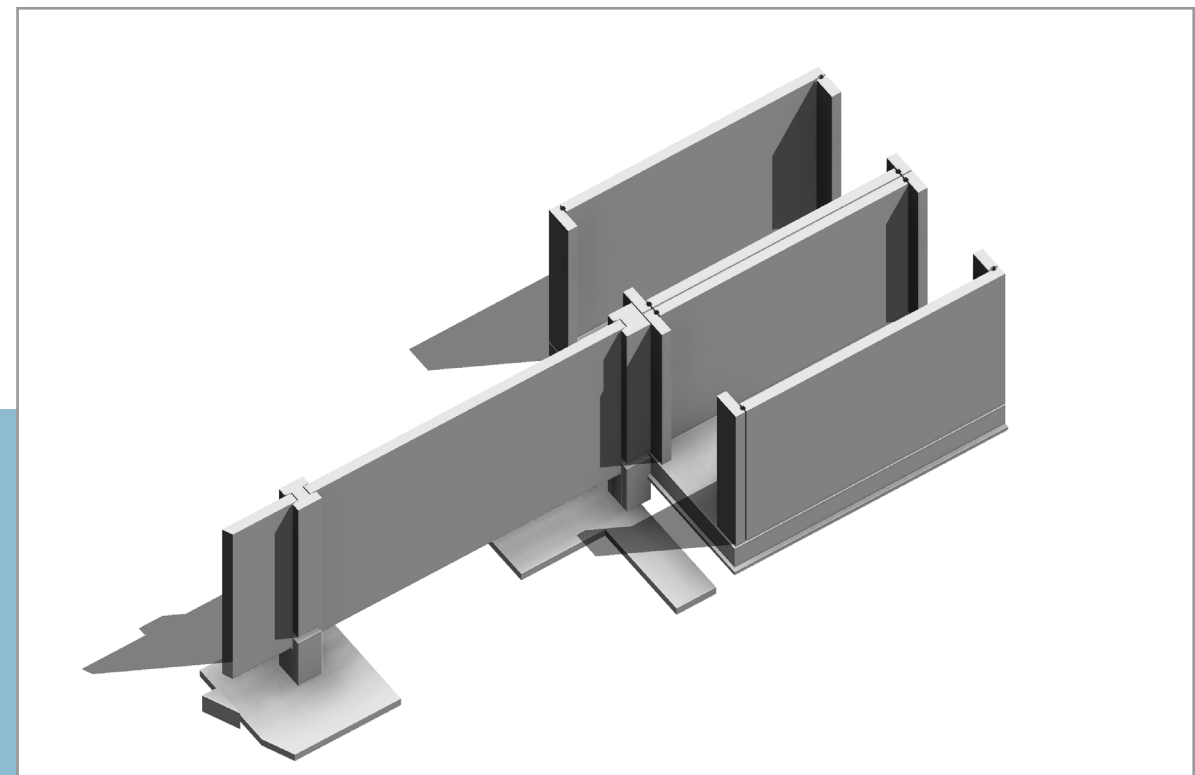
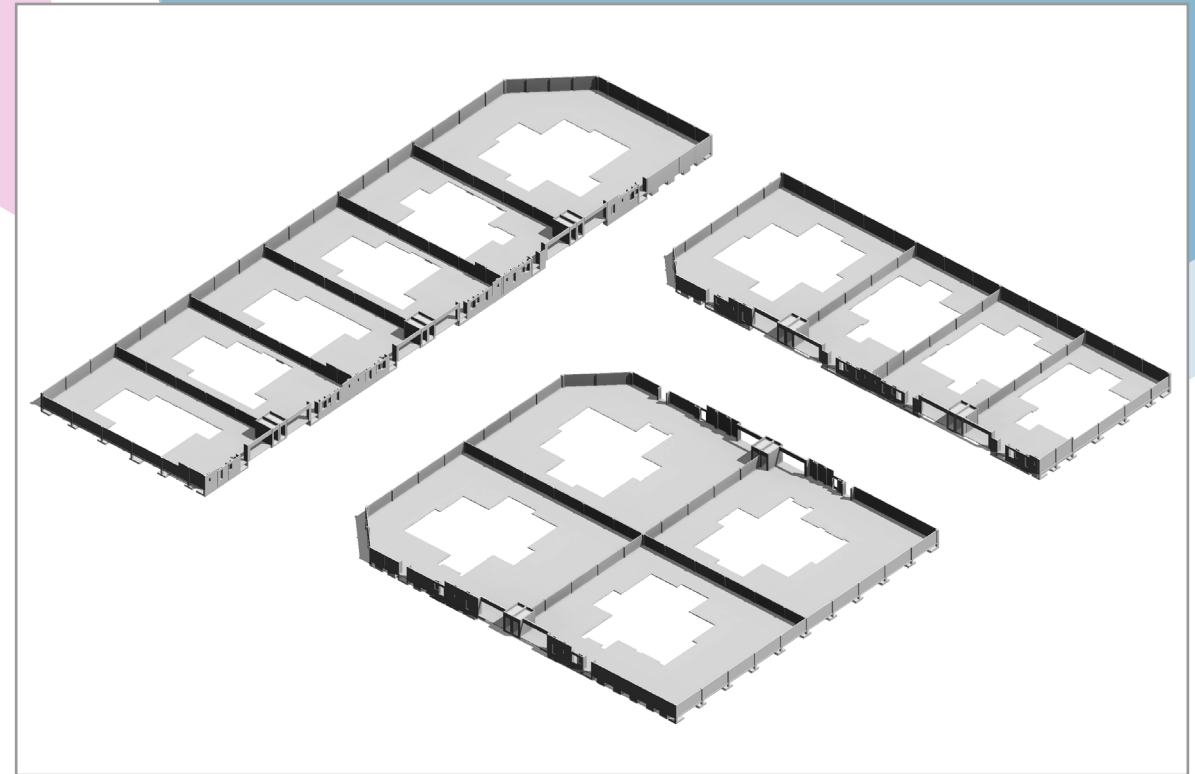
**Level-wise Segmentation:** Maintained clear level organization across all clusters for better clarity and construction sequencing.

Location - Abu Dhabi(UAE)

Area - 767794 sq.m

Operator - AIPC

Duration - 6 months





# OUR PROJECTS

02

## THE St. Regis RED SEA RESORTS BIM TO GIS IMPLEMENTATION

we led the BIM to 2D GIS implementation for The St. Regis Red Sea Resorts, ensuring seamless integration of Building Information Modeling (BIM) data into a geospatial framework. Using ArcGIS Pro and adhering to the Red Sea GIS procedure, we transformed complex BIM models into structured 2D GIS datasets to enhance spatial analysis, asset management, and decision-making.

### DISCIPLINES INVOLVED

LANDSCAPE

ELECTRICAL

IRRIGATION

HARDSCAPE

### OUR SCOPE OF WORK INCLUDED

**Conversion of BIM Data to GIS** – Extracting key spatial and attribute data from 3D BIM models and converting them into GIS-compatible 2D formats.

**Geospatial Data Structuring** – Organizing layers for buildings, utilities, infrastructure, and landscape elements in a GIS environment.

**Mapping & Visualization** – Creating accurate 2D GIS maps for site planning, facilities management, and operational workflows.

**Compliance with Red Sea GIS Standards** – Ensuring all geospatial outputs met The Red Sea Project's GIS procedure, enhancing data consistency and usability.

Location - Red Sea, Saudi Arabia

Area - 5600000 sq.m

Operator - Red Sea Global

Duration - 6 months





# OUR PROJECTS

02

## NEOM - LOGISTICS PARK LANDSCAPE PROJECT A Benchmark in Advanced BIM Implementation

The NEOM Logistics Park project stands as a testament to our expertise in handling complex and challenging projects with precision and excellence. The successful implementation of Building Information Modeling (BIM) at Level of Detail (LOD) 500 during the as-built stage with all COBie data integration is one of our significant achievements. This high level of detail encompassed various aspects of the project, ensuring unparalleled accuracy and integration with 100% clash free as built BIM models.

### DISCIPLINES INVOLVED

ARCHITECTURE

STRUCTURAL

PLUMBING

DRAINAGE

FIRE SAFETY

FOUNTAINS

IRRIGATION

ELECTRICAL

SOLAR SYSTEM

LANDSCAPE

TOPOGRAPHY

ROAD WORK

### WE ADHERED TO FOLLOWING NEOM STANDARDS

NEOM EIR

PRC 009

PRC 010

PRC 020

PRC 030

PRC 010

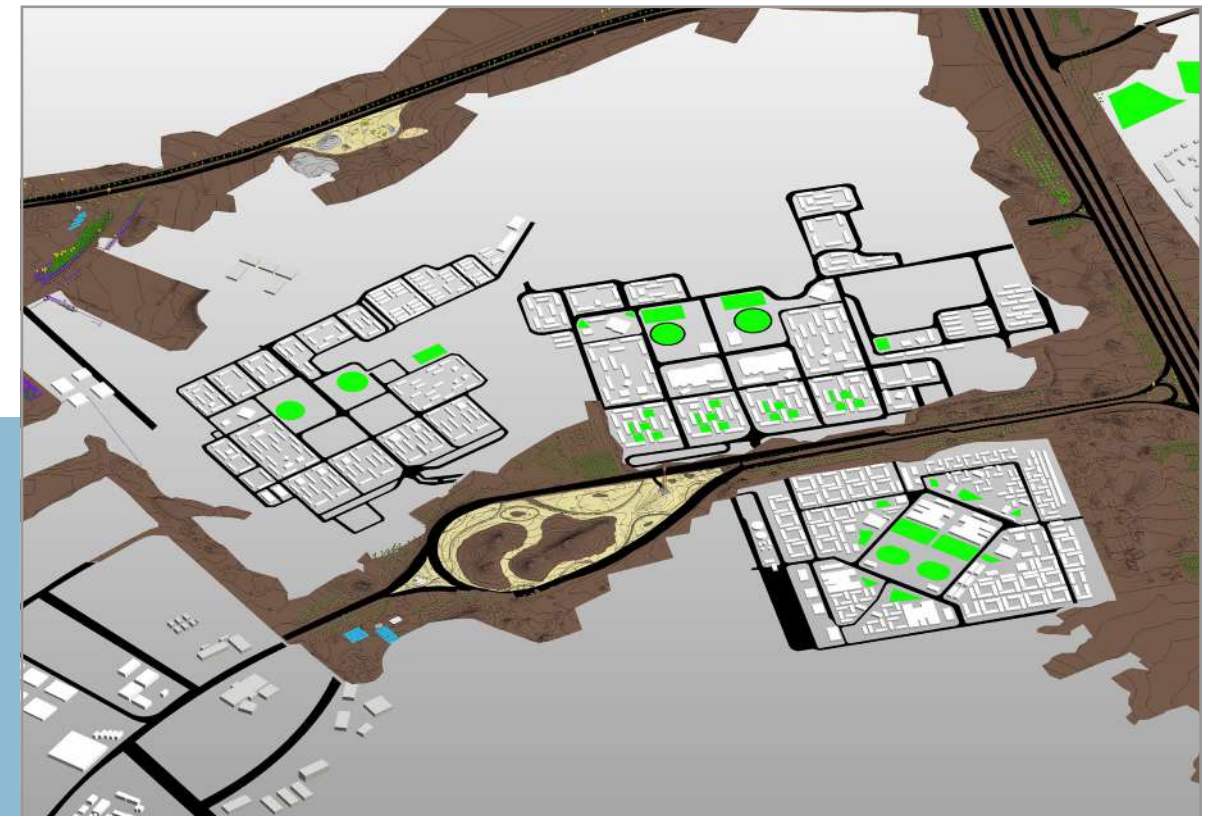
&amp; OTHERS

Location - NEOM, Saudi Arabia

Area - 4980332.410 sq.m

Operator - NEOM

Duration - 12 Months





# OUR PROJECTS

03

## KWA-ZULU NATAL DEPARTMENT OF WORKS Pointcloud to BIM Implementation

Our team successfully completed a Point Cloud to BIM project for the KwaZulu-Natal Department of Works in South Africa. The collected point cloud data was then processed through registration, cleaning, and segmentation techniques to create a cohesive dataset. Using Autodesk Revit, we converted the refined point cloud data into accurate and detailed 3D BIM models. These models included comprehensive geometry and metadata for all structural and architectural elements. The resulting BIM models are intended to improve the Department's facility management, support efficient renovation planning, and streamline maintenance operations.

### DISCIPLINES INVOLVED

ARCHITECTURE

STRUCTURAL

PLUMBING

DRAINAGE

FIRE SAFETY

ELECTRICAL

HVAC

### WE ADHERED TO FOLLOWING BIM STANDARDS

BS 1192

PAS 1192

AECUK STD

EIR

BEP

MIDP

&amp; OTHERS

Location - South Africa

Area - 4000 sq.m

Operator - KWA, Zulu Natal Department of Works

Duration - 3 months



# OUR PROJECTS

04

## SOCIAL HOUSING MAINTENANCE MANAGEMENT NEN2580 Compliant Digital Twins - Netherlands

Harnessing existing point cloud data, we worked on a transformative endeavor to develop NEN2580 compliant digital twins for multiple units of social housing across diverse cities in the Netherlands. Our way of approach prioritized adherence to the stringent NEN2580 standard, ensuring precision and regulatory compliance at every stage.

With a foundation of captured point cloud data, we meticulously refined, registered, and segmented the information to meet NEN2580's exacting requirements. This involved rigorous quality control measures to guarantee accuracy in the digital representation of each housing unit.

### DISCIPLINES INVOLVED

ARCHITECTURE

### WE ADHERED TO FOLLOWING STANDARDS

NEN 2580

LUX STANDARDS

GEBOUW SCHEDULE

BME STANDARDS

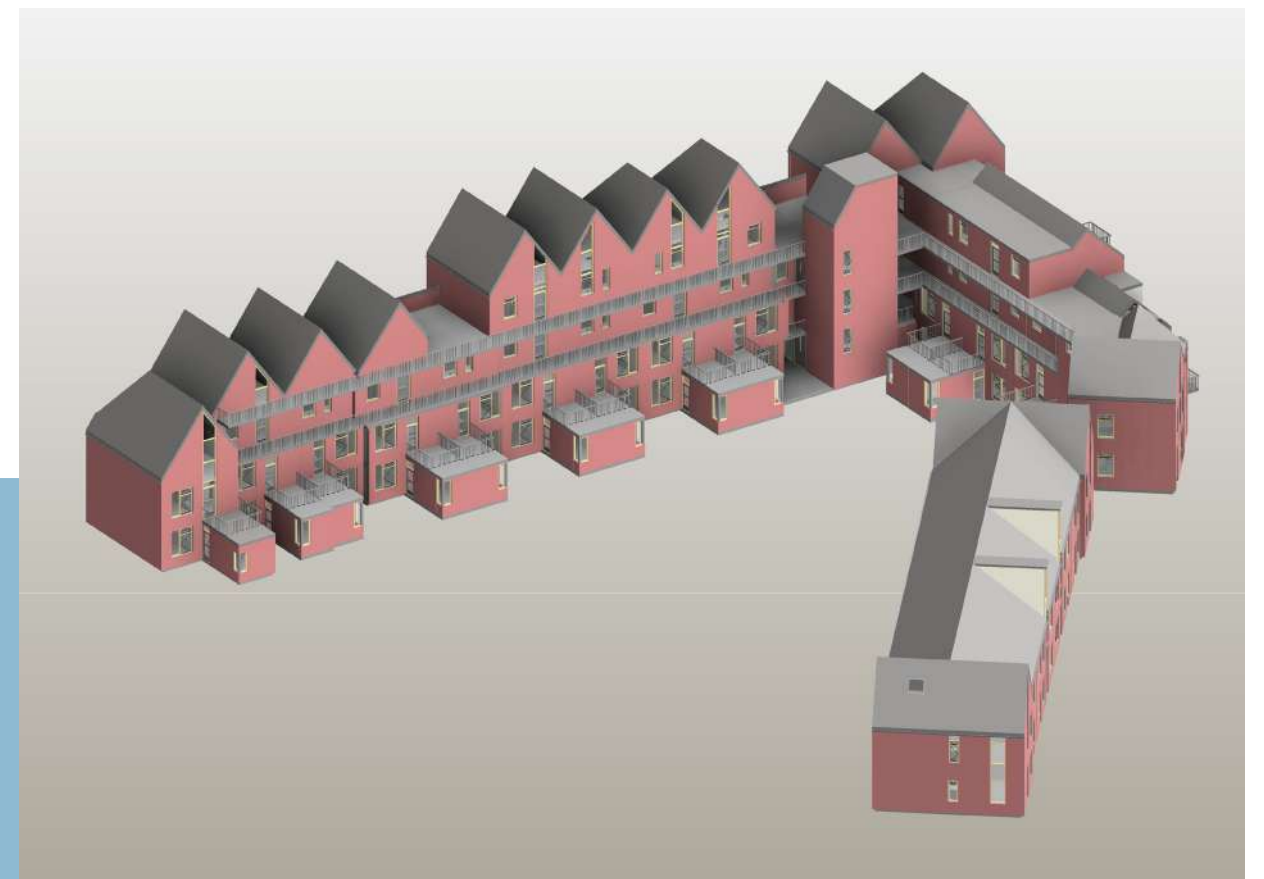
TRAINING DOCUMENT

Location - Netherlands

Area - Various Housing Units

Operator - Various FM Companies

Duration - 6 months





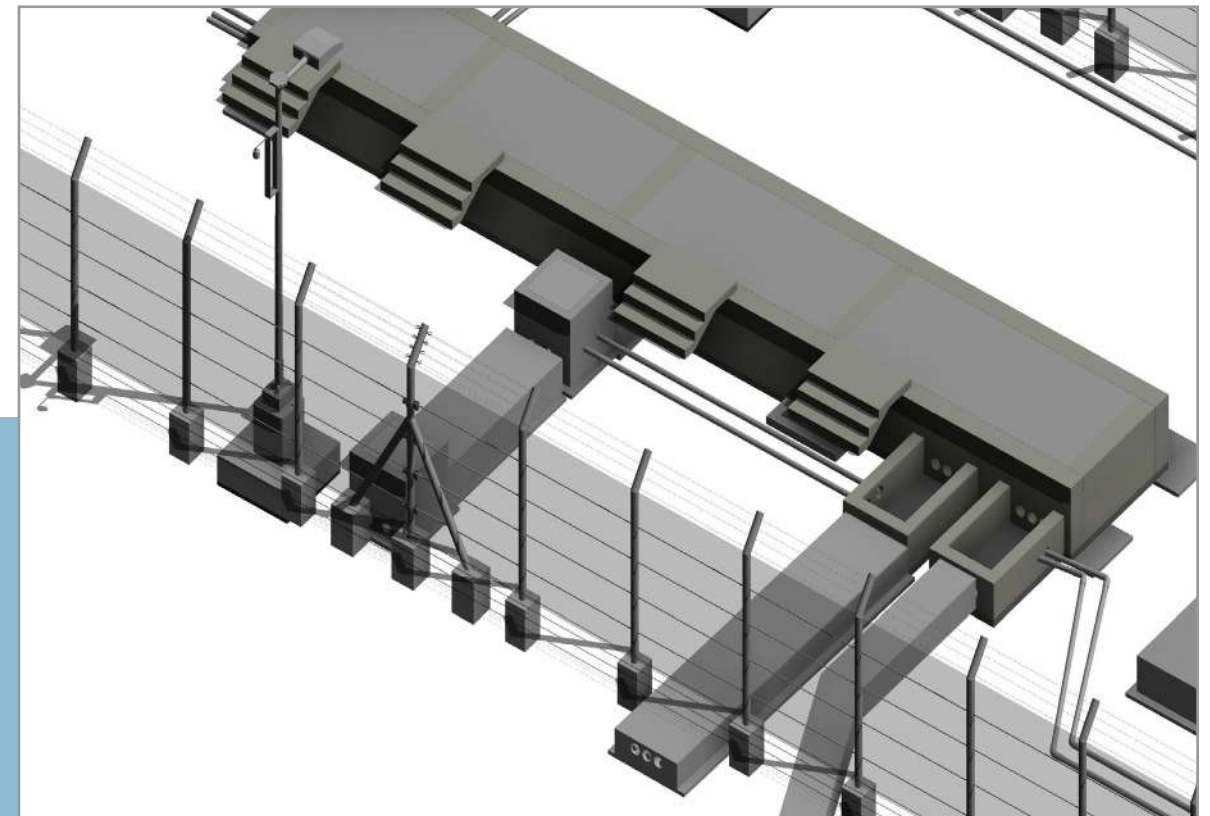
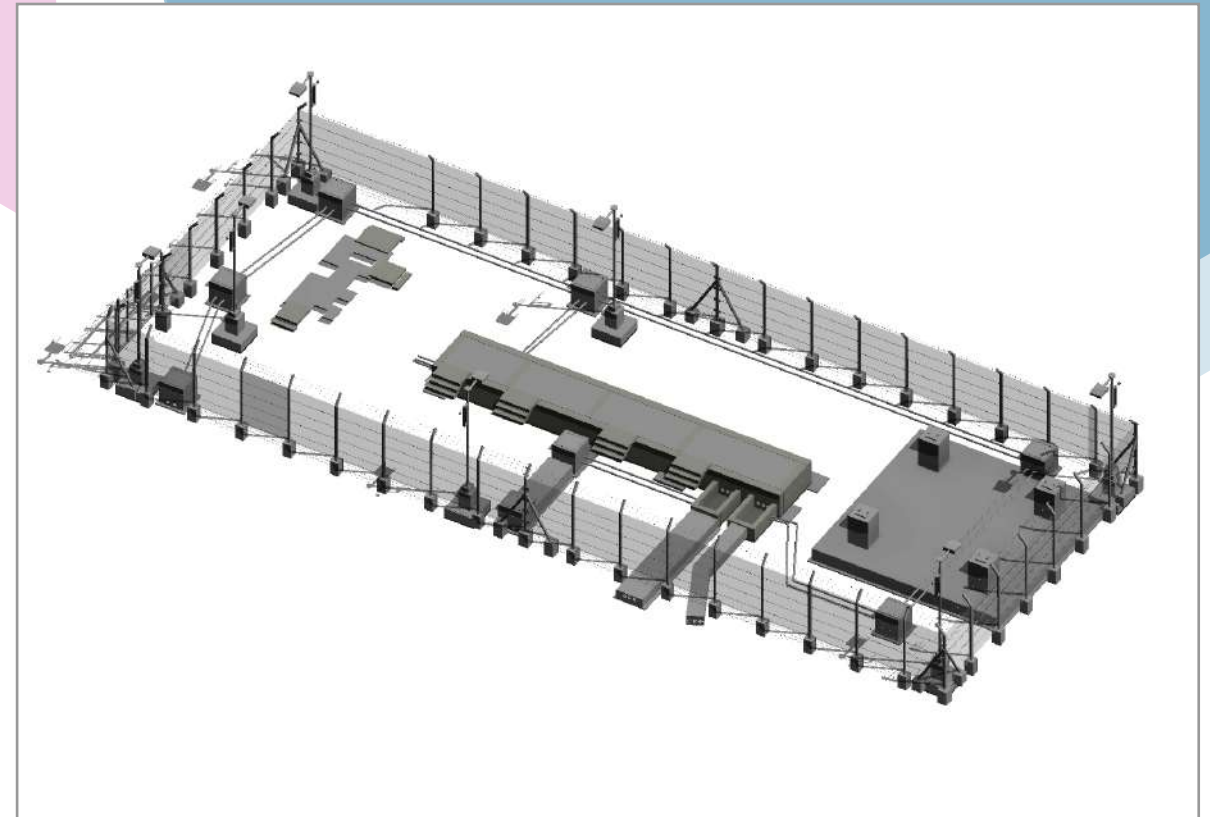
# OUR PROJECTS

**02**

## SHELTER MODEL FOR ETIHAD RAILWAYS

The BIM model of the Etihad Rail shelter presents a secure and well-structured facility with controlled access, reinforced fencing, and operational efficiency. It integrates surveillance, lighting, and essential infrastructure for seamless functionality. The design includes staircases, ramps, and sheltered areas, ensuring safety and accessibility. Optimized for space utilization, the model meets safety standards while enhancing operational workflows. The detailed modeling supports precise construction planning and long-term maintenance.

### DISCIPLINES INVOLVED

**ARCHITECTURE****STRUCTURAL****ELECTRICAL****Location - Dubai****Area - 850 sq.m****Operator - Etihad Rail****Duration - 1 Month**

# OUR PROJECTS

05

## CARRIER PARKWAY TOWNHOMES Grand Praire - Texas

The BIM skills Company provided comprehensive BIM services for a row houses project in Texas, USA. Our services included:

- 1.Design Drawings** : Detailed and accurate visualizations to aid in project planning.
- 2.Permit Drawings** : Complete and compliant drawings for obtaining construction permits.
- 3.IFC Drawings** : Industry Foundation Classes(IFC) drawings for seamless data exchange.
- 4.Renderings** : High-quality visualizations for stakeholder approval.
- 5.Clash Detection and Resolution** : Identifying and resolving clashes within the BIM model to prevent construction issues.

### DISCIPLINES INVOLVED

ARCHITECTURE

STRUCTURE

MEP

### WE ADHERED TO FOLLOWING STANDARDS

IBC CODES

BYE LAWS

Location - Texas, USA  
Area - 12000sqft  
Operator - My Castle Homes LLC  
Duration - As per project



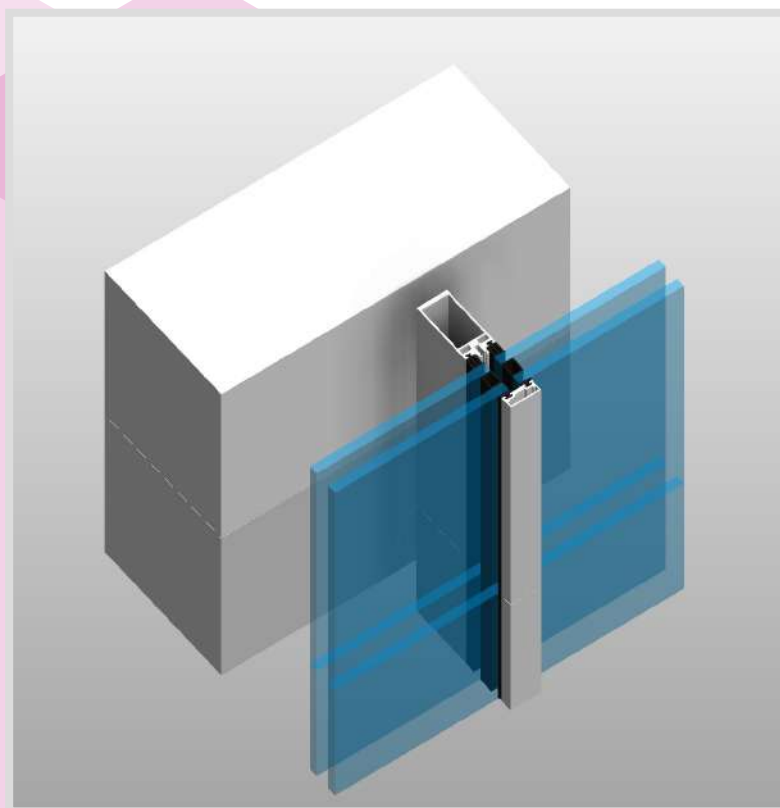
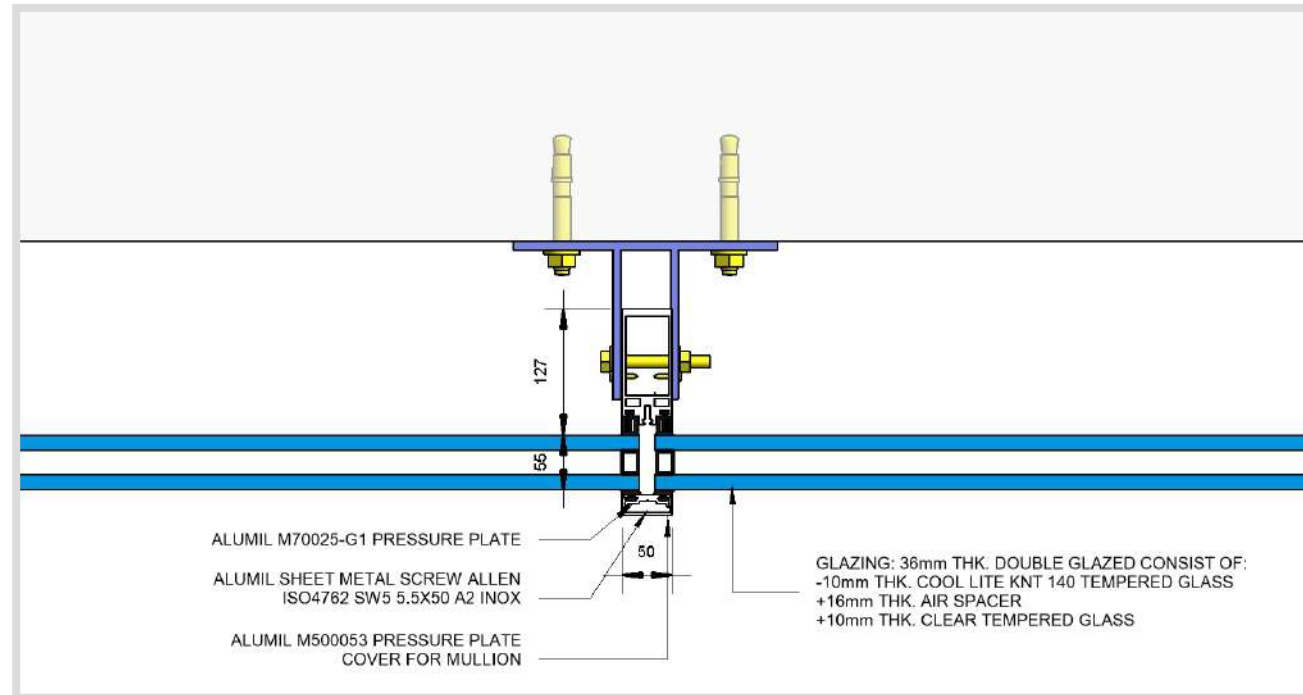


# OUR PROJECTS

06

## FACADE DETAILS

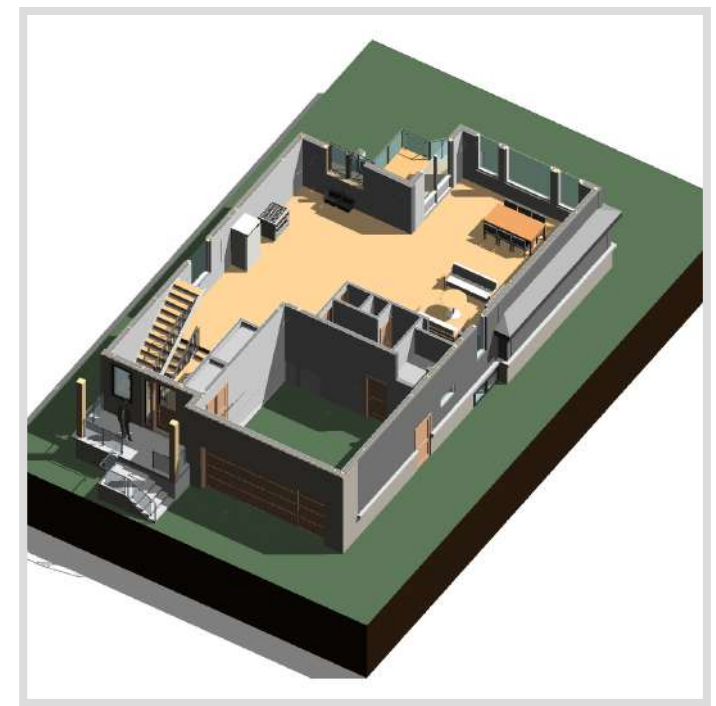
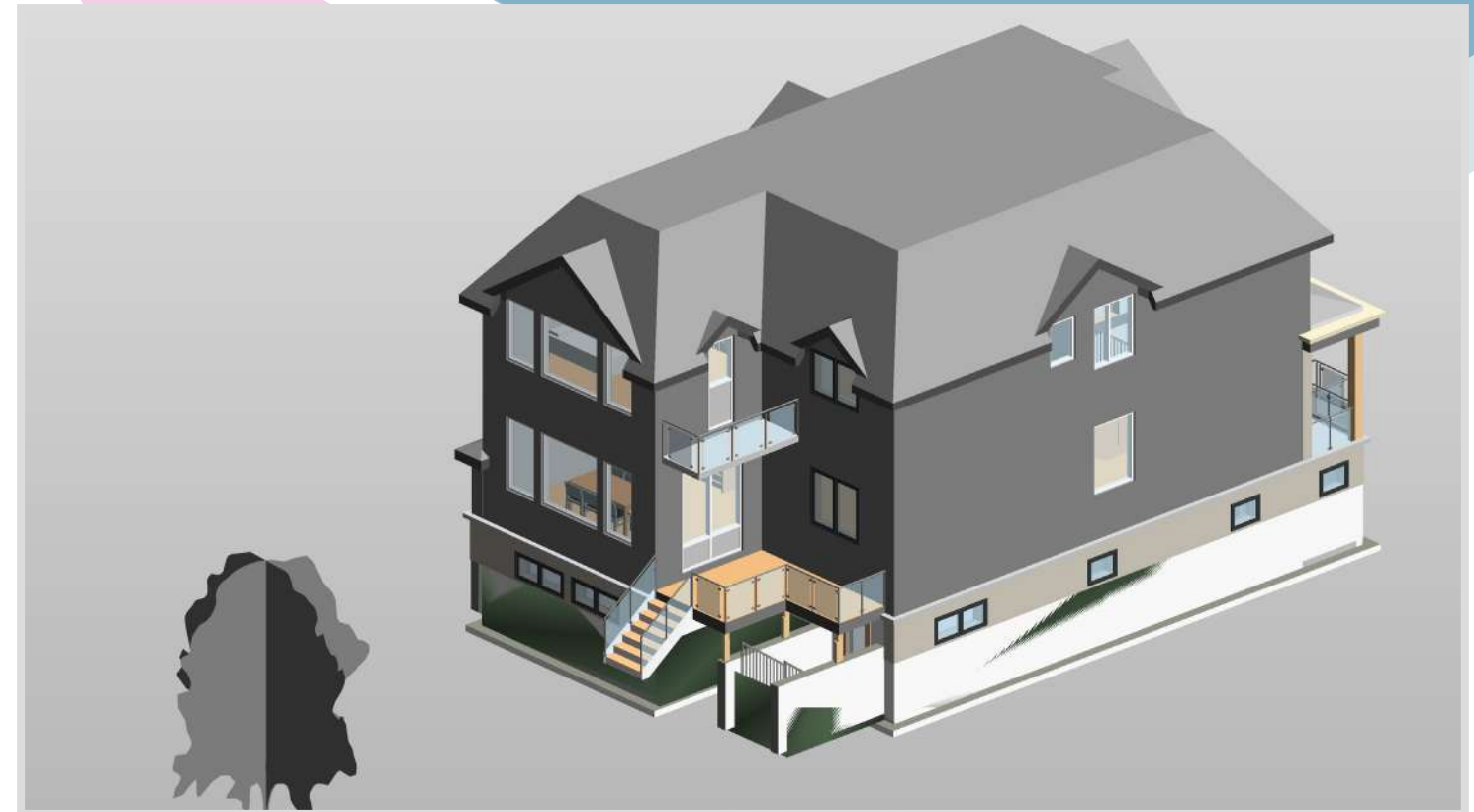
Location - Saudi Arabia



07

## 2 STORY HOUSE

Location - USA





# OUR PROJECTS

## 08 ARCHICAD WORKS





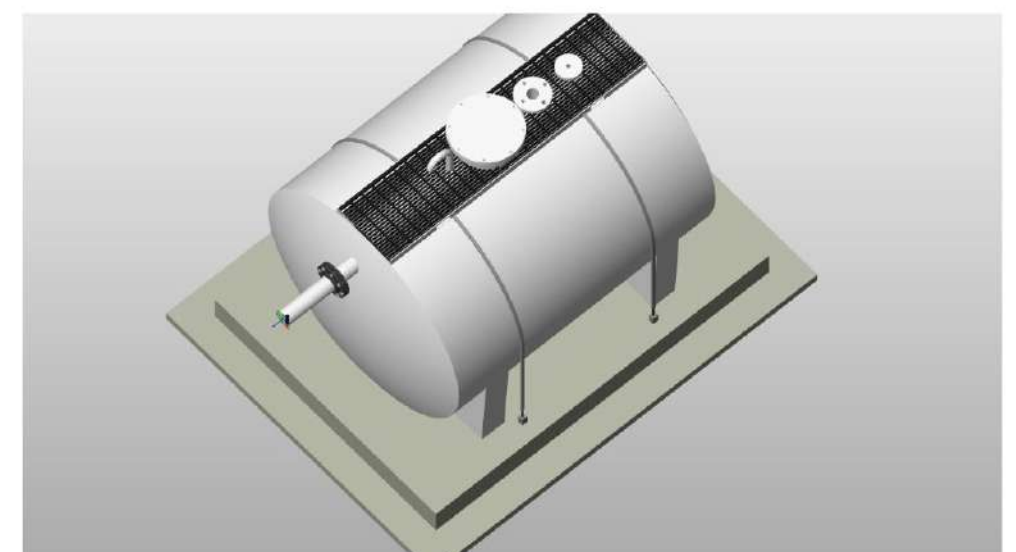
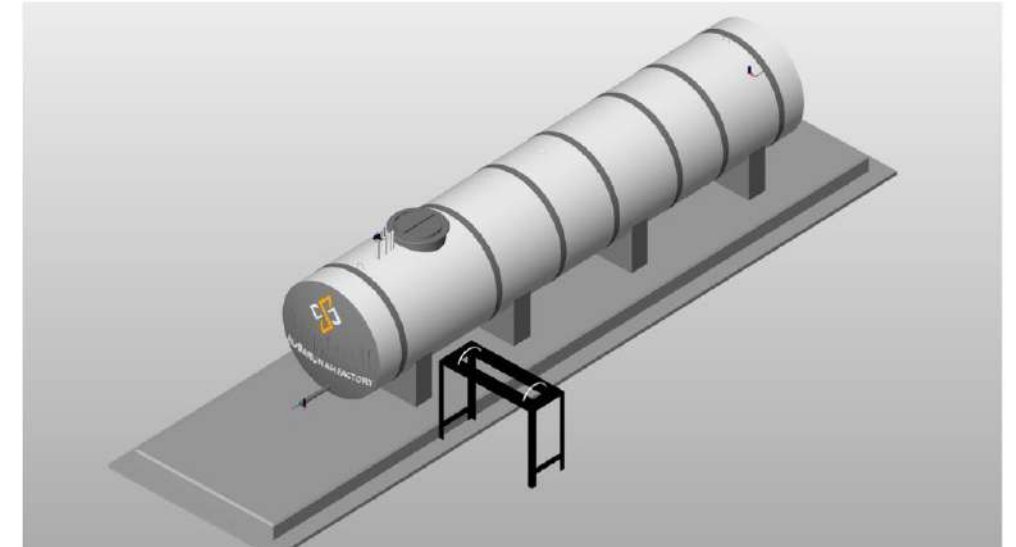
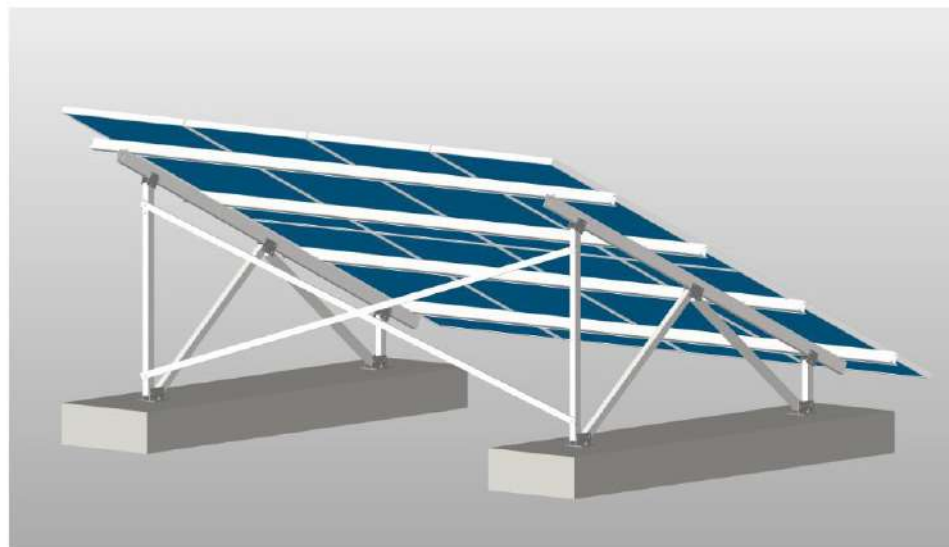
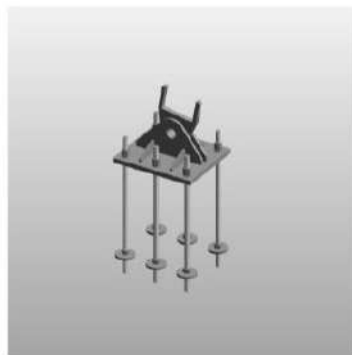
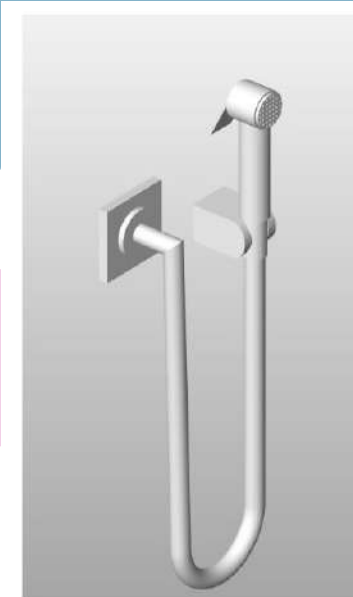
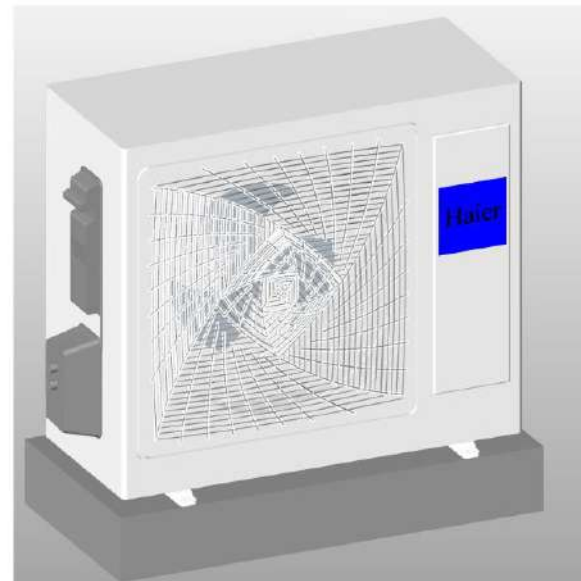
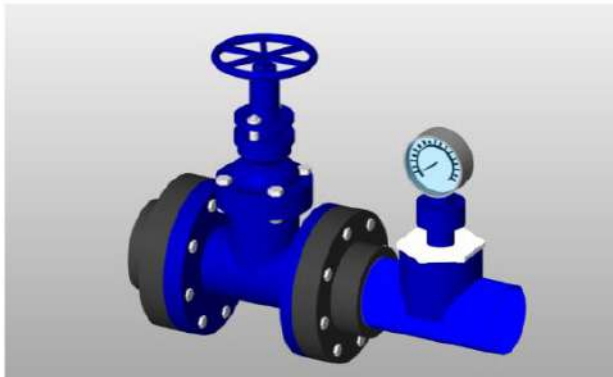
# OUR PROJECTS

## 09 ARCHICAD WORKS



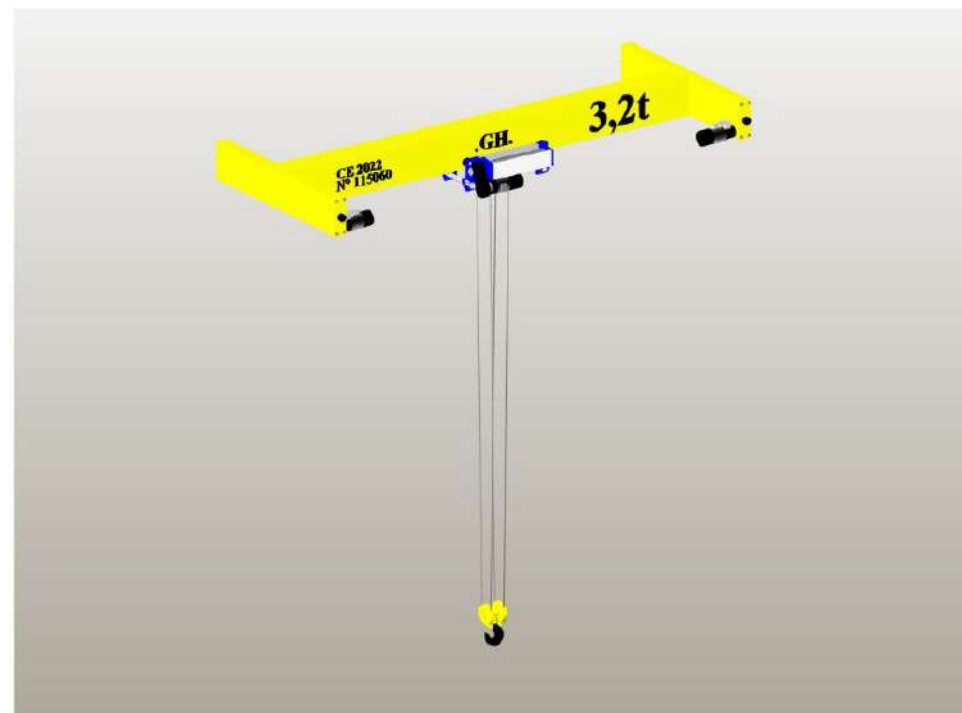
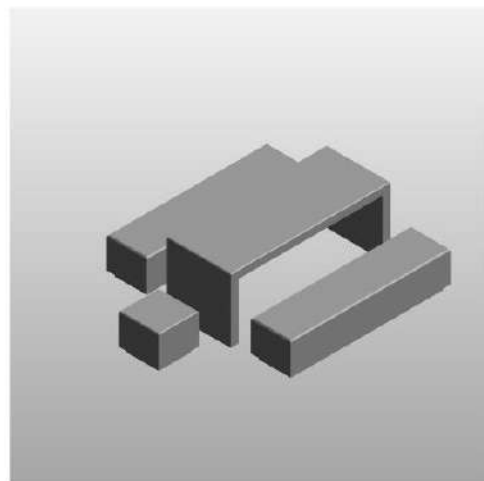
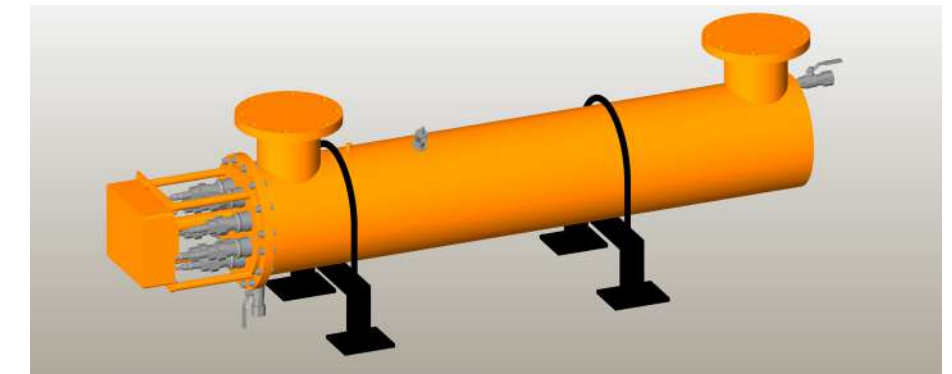
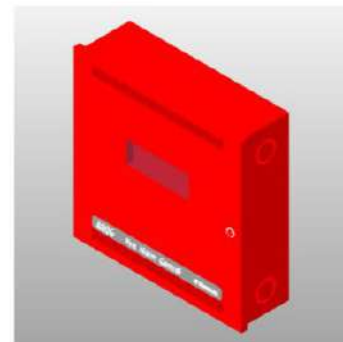
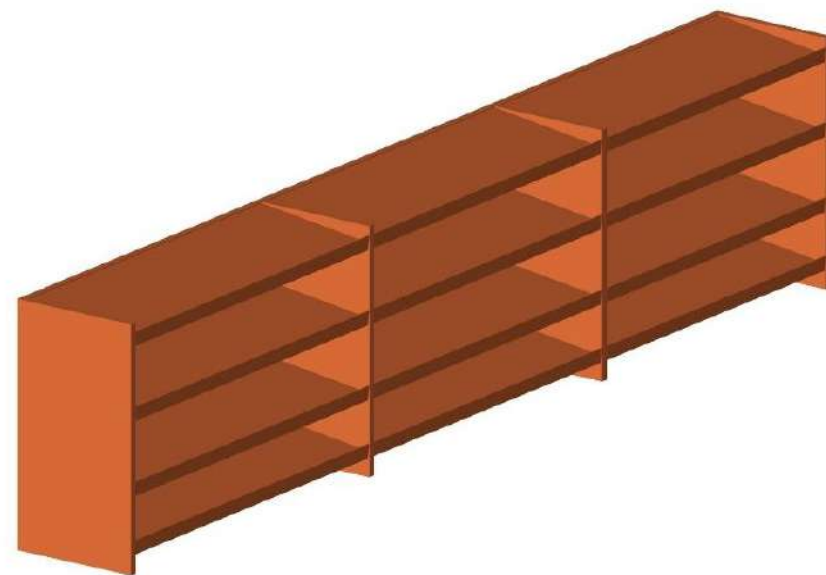
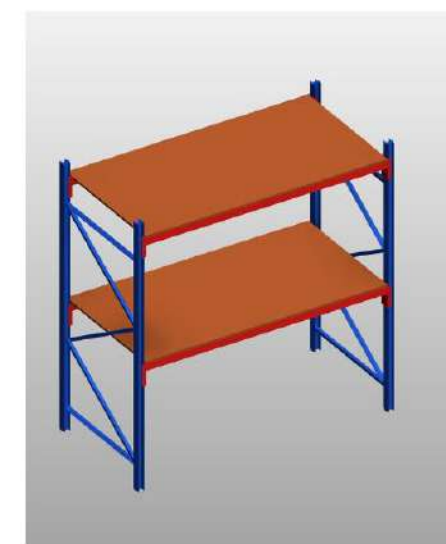
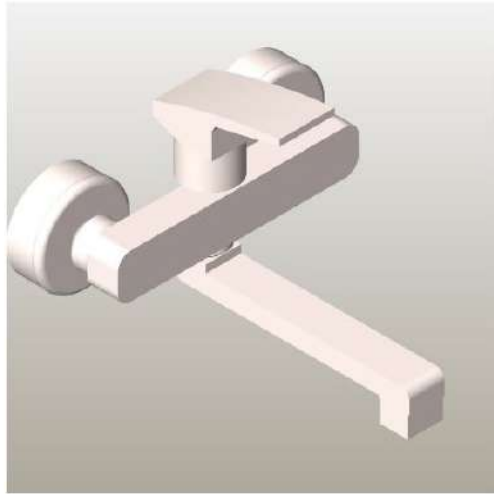


# REVIT FAMILY CREATION





# REVIT FAMILY CREATION



# Thank You!

“We appreciate your interest in The BIM skills Company. Let’s collaborate to innovate and construct a brighter future. Together, we can achieve extraordinary results.”

**We are never more than an email or phone call away!**

 [services@thebimskills.com](mailto:services@thebimskills.com)

 [www.thebimskills.com](http://www.thebimskills.com)

  +918197029799



**The BIM skills**  
“BIM Consulting & Training”



1st Floor ,RS Complex Opp.Bombay Building  
Mailoor, Bidar, Karnataka- 585403, INDIA